



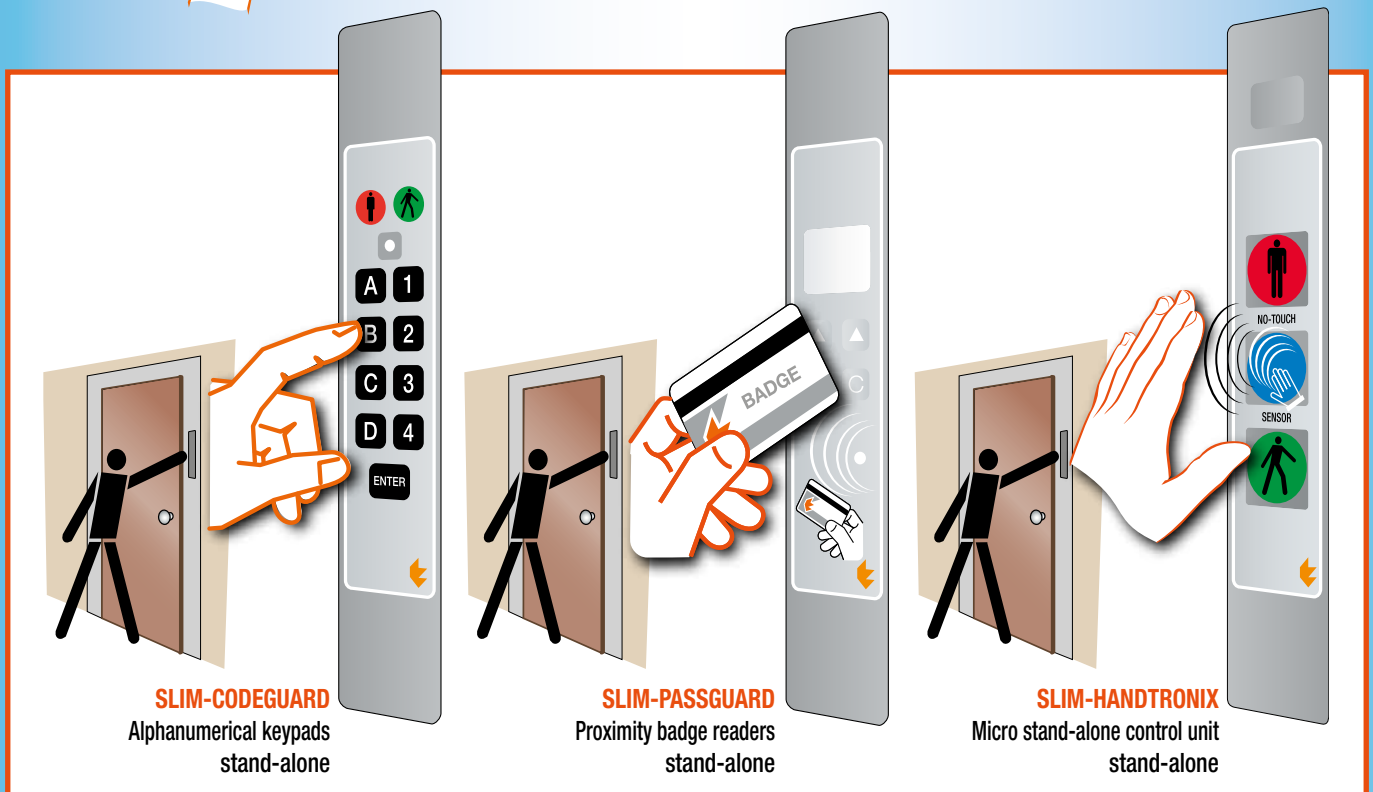
## DOOR MANAGEMENT SYSTEMS

### STAND-ALONE UNIT

Readers and numerical keypads for creating  
access control systems



3 devices with 5 different functions,  
in a single unified convertible module.



with 5 types of installation next to the door

## Ultraslim and supercompact devices in unified convertible format in 5 installation types next to door.

Alphanumeric  
keypads stand-alone  
**SLIM-CODEGUARD**



Proximity badge  
readers stand-alone  
**SLIM-PASSGUARD**



Micro stand-alone  
control unit stand-alone  
**SLIM-HANDTRONIX**

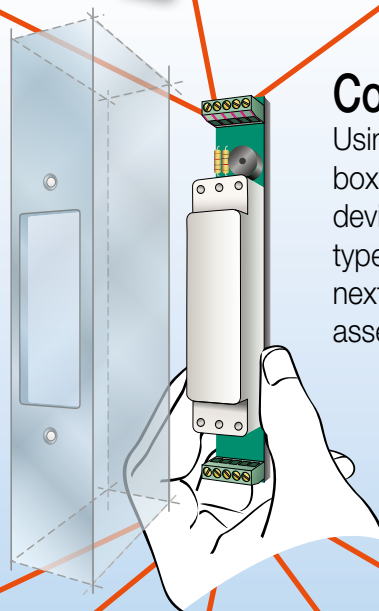


### Unified module because....

A full SLIM & MODULAR range of devices with different functions, operations and purposes (code key pad, badge readers, micro stop and go display control panels, and stop and go display panels, entryphones and button panels on same series...) designed and made bearing in mind a single module of one size (Same for all). In fact, all the devices have the same appearance, size and modularity in order to be interchangeable and to be housed in the same unified chasing of the previous lock.

### Convertible because...

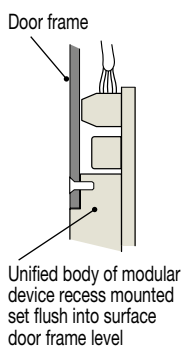
Using unified flanges, cases and boxes, any unified SLIM & MODULAR device is convertible into 5 different types that can be installed in any way, next to the door, based on the assembly needs found in the field.



#### Assembly type

**1**

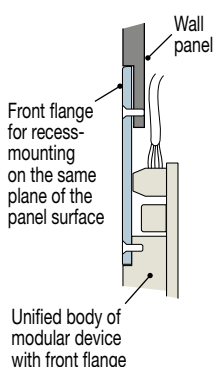
**fully aligned concealed**  
for recess-mounting  
without flange  
on the same plane of  
the door frame panel



#### Assembly type

**2**

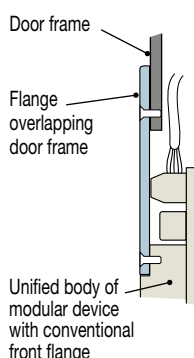
**fully aligned at milling**  
for recess-mounting  
with front flange  
on the same plane  
of the panel surface



#### Assembly type

**3**

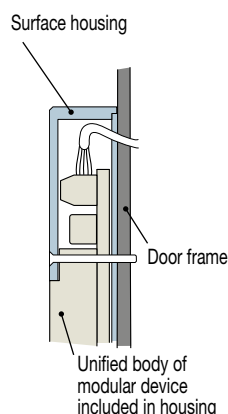
**for conventional flush  
mounting**  
with front flange  
overlapping door frame



#### Assembly type

**4**

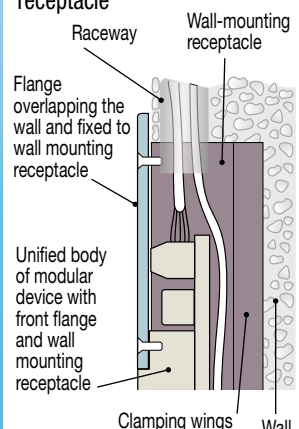
**for surface mounting**  
with using housing




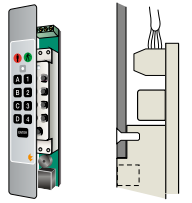
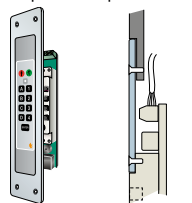
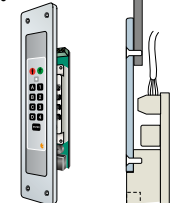
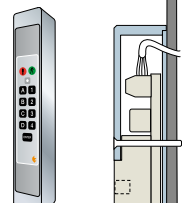
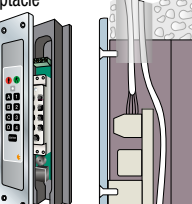


#### Assembly type

**5**

**for recessed wall-mounting**  
with flange and wall-mounting  
receptacle



 <h2>SLIM-CODEGUARD STAND-ALONE PROFESSIONAL CODE KEYPAD</h2>		<b>Export Product-list</b> January 2024  <b>TECNODIMENSIONE®</b>	
<p>Programmable and modifiable without limitation and directly on the keypad in the field (using proprietary programming code, also programmable as desired in the field).</p> <p>Alphanumeric access code can be 2 to 8 digits long.</p> <ul style="list-style-type: none"> <li>- With screw-type terminal box for conventional cables for connection to control panel (for independent use with any system also from different manufacturer).</li> <li>- 8 alphanumerical keys + Enter key for entering the codes.-2VDC/70 mA power supply.</li> <li>- NO → NC output contact (for code recognition), 12VDC/1A rating for door opening control, timed at app. 5 seconds.</li> <li>- 1 self-adhesive cover in polycarbonate, 180 x 30 mm R2,5 - thickness 0.3 mm, with international symbols, available in 7 colours</li> <li>- two-color R/G LED + buzzer to confirm the opening of the door.</li> </ul>		Ordering information 	Q.ty N°
Models for 12 VDC power supply		MODELS	
<b>Assembly type 1</b> fully aligned concealed for recess-mounting without flange on the same plane of the door frame panel * 	SLIM-CODEGUARD access code keypad type 1 with fully aligned concealed for recess-mounting on the same plane of the door frame panel without flange. Ideal to achieve a "smooth" surface (without roughness) that is easy to clean. Supplied with diffuser screen and gap G for sections with a thickness of 1.6 mm. Complete with self-adhesive cover designed to be applied after the final installation of the system. <b>* In this case it is advisable to prepare the recess during the door frame machining.</b>	034991NM2U	
	Same with front panel and gap G for sections with a thickness of 3 mm.	034991NM2U3	
<b>Assembly type 2</b> fully aligned at milling for recess-mounting with front flange on the same plane of the panel surface ♦ 	SLIM-CODEGUARD access code keypad type 2 for aligned recessed flush fitting in bottom of panel using front flange (e.g. To mount on wall panel next to the door frame on the post where no chasing can be carried out). Supplied with front flange in anodized aluminium with "silver" finish, 250 x 50 mm, thickness 2.5 mm for recess-mounting on the same plane of the panel surface for aligned recessed flush fitting in bottom of plane using front flange. Cover pre-assembled and fixed into the flange niche. <b>♦ In this case, it is advisable to prepare sunk milling during the panel machining phase.</b>	034992NM2U	
<b>Assembly type 3</b> for conventional flush mounting with front flange overlapping door frame 	SLIM-CODEGUARD access code keypad type 3 for traditional recessed fitting using flange. Supplied with front flange in anodized aluminium with "silver" finish - 250 x 50 mm, thickness 4 mm for flush mounting. Cover pre-assembled and fixed into the flange niche. <b>Mounting can be carried out "on site", directly onto the installed door frame.</b>	034993NM2U	
<b>Assembly type 4</b> for surface mounting with using housing 	SLIM-CODEGUARD access code keypad type 4 for mounting placed on surface using housing. With extra-strong protective housing, made in anodized silver finish aluminium (35 x 25 x 215 mm). Self-adhesive cover in polycarbonate, provided separately and designed to be used as final cover to hide the 4 fixing screws of the housing on the door frame. <b>Useful when you wish to avoid recess-mounting or cuts on the door frame.</b>	034994NM2U	
<b>Assembly type 5</b> for recessed wall-mounting with flange and wall-mounting receptacle 	SLIM-CODEGUARD access code keypad type 5 for recessed assembly using flange and wall box. Supplied with front flange in anodized aluminium with "silver" finish - 250 x 50 mm, thickness 4 mm, to be fixed to the housing by placing on wall surface. Self-adhesive cover in polycarbonate pre-assembled and fixed into the flange niche. Also fitted with wall box with "wings" for rapid anchoring (65 x 30 x 230 mm), in plastic taken from single block to be assembled "in a niche" in the wall to house the body of the access code keypad. <b>Wall niche and cable channel to be prepared beforehand.</b>	034995NM2U	

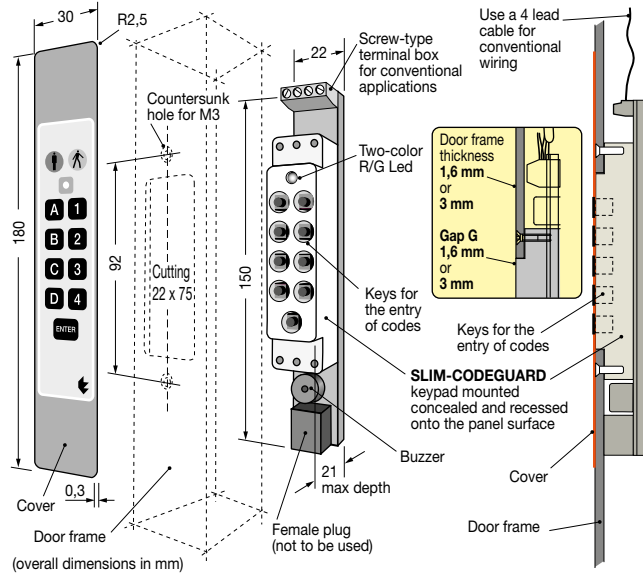
**Special configurations available at extra charge:** Cover with your logo and/or customized.

*For sizes, measurements and details of chasing, application examples and connection diagrams, see page 89*

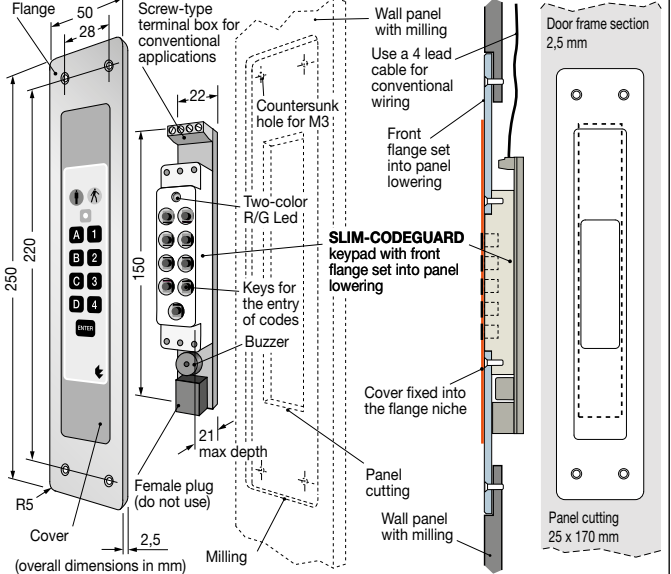
# SLIM-CODEGUARD STAND-ALONE KEYPADS

## sizes, application examples and connection diagram

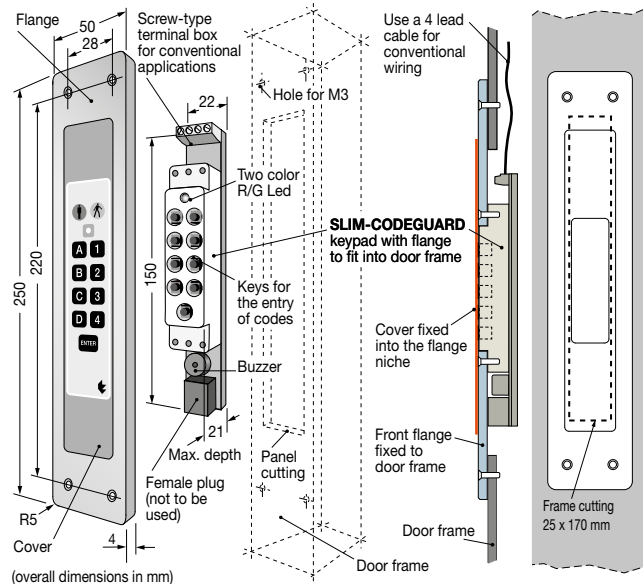
### Assembly type ① total alignment, lock recessed into surface without flange



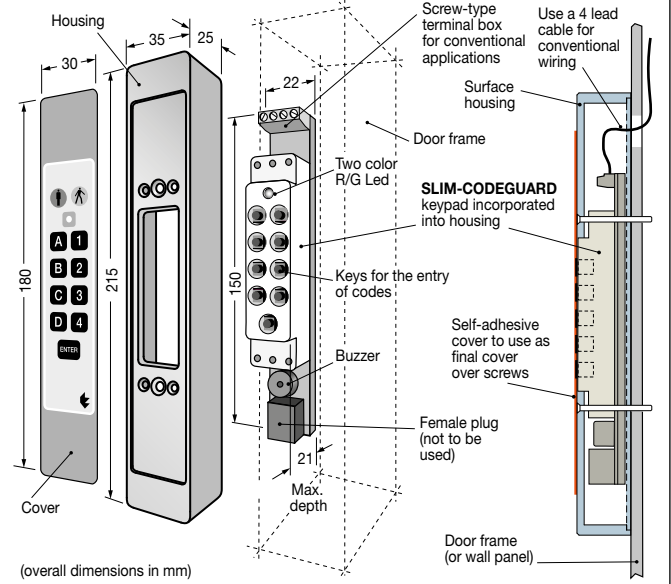
### Assembly type ② alignment at bottom with front flange "flush with surface" at bottom



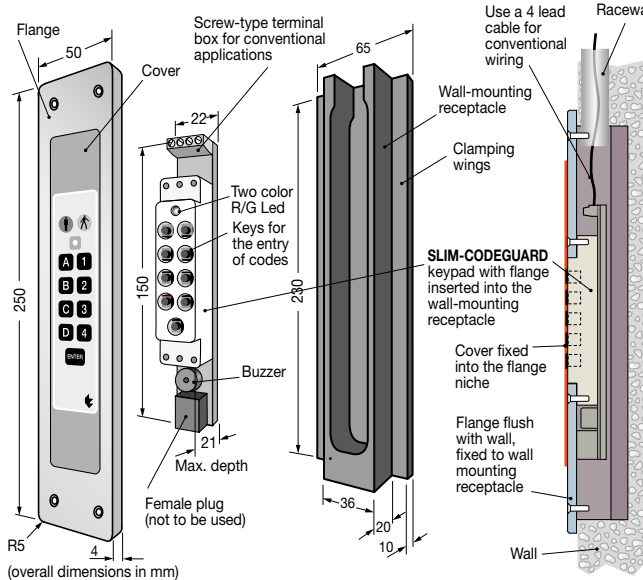
### Assembly type ③ traditional fitting with front flange over the lock



### Assembly type ④ for mounting placed on surface using housing



### Assembly type ⑤ for recessed wall mounting with flange and wall box



### CONNECTION DIAGRAM valid for all 5 types

