



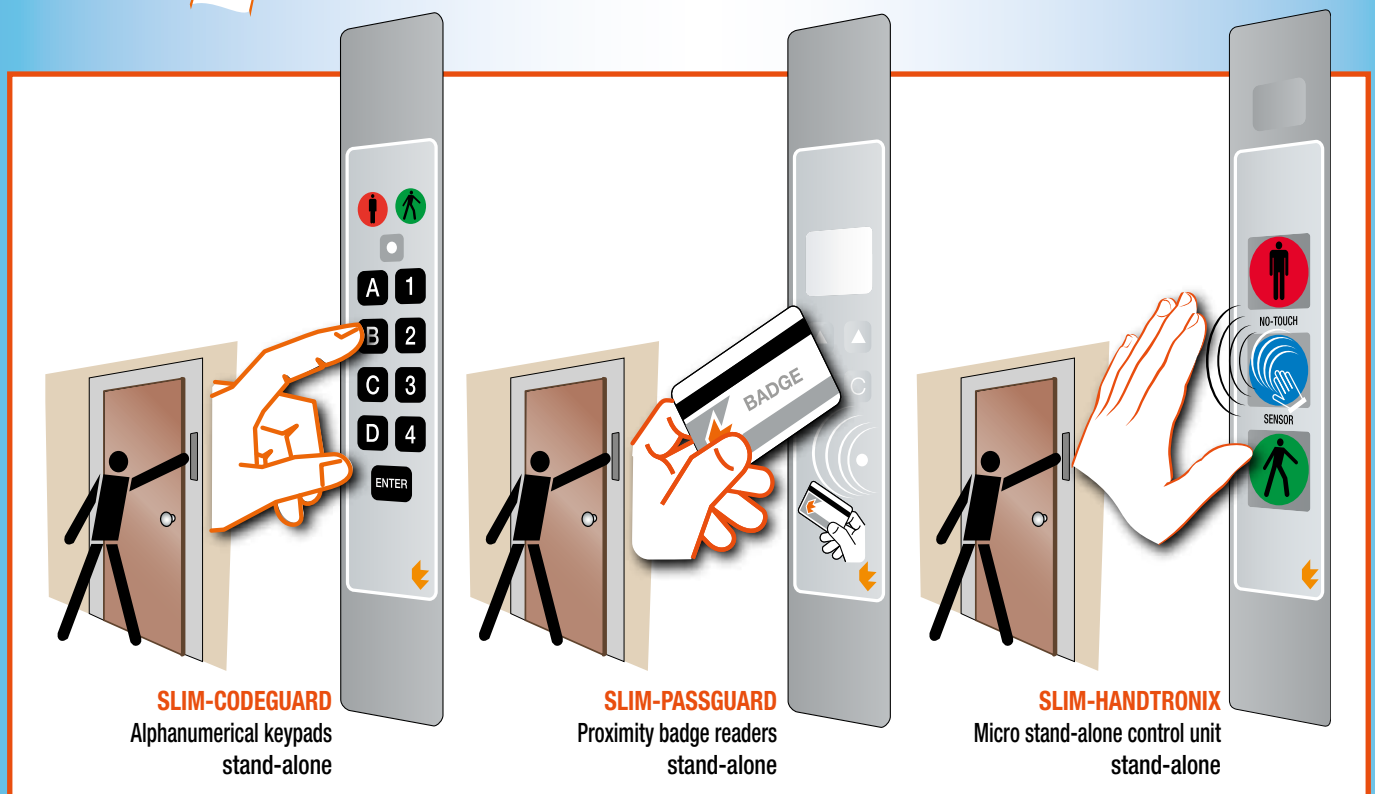
DOOR MANAGEMENT SYSTEMS

STAND-ALONE UNIT

Readers and numerical keypads for creating
access control systems



3 devices with 5 different functions,
in a single unified convertible module.



with 5 types of installation next to the door

Ultraslim and supercompact devices in unified convertible format in 5 installation types next to door.

Alphanumeric
keypads stand-alone
SLIM-CODEGUARD



Proximity badge
readers stand-alone
SLIM-PASSGUARD



Micro stand-alone
control unit stand-alone
SLIM-HANDTRONIX

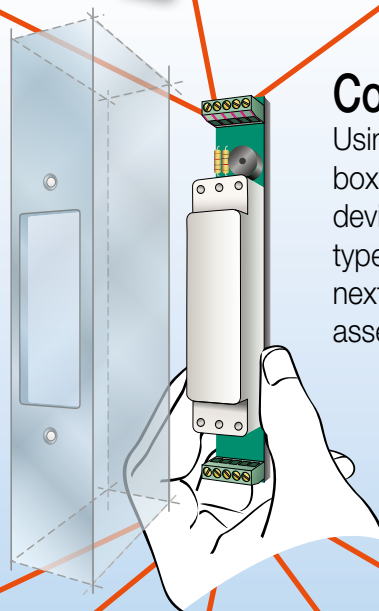


Unified module because....

A full SLIM & MODULAR range of devices with different functions, operations and purposes (code key pad, badge readers, micro stop and go display control panels, and stop and go display panels, entryphones and button panels on same series...) designed and made bearing in mind a single module of one size (Same for all). In fact, all the devices have the same appearance, size and modularity in order to be interchangeable and to be housed in the same unified chasing of the previous lock.

Convertible because...

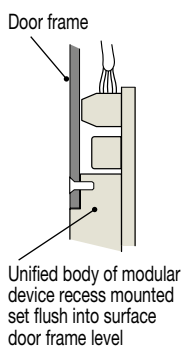
Using unified flanges, cases and boxes, any unified SLIM & MODULAR device is convertible into 5 different types that can be installed in any way, next to the door, based on the assembly needs found in the field.



Assembly type

1

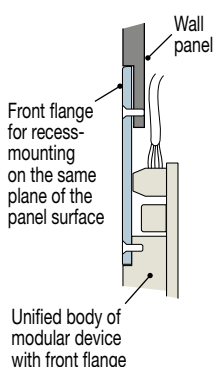
fully aligned concealed
for recess-mounting
without flange
on the same plane of
the door frame panel



Assembly type

2

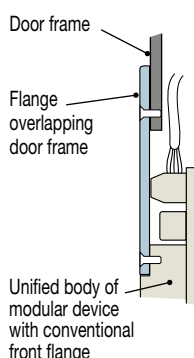
fully aligned at milling
for recess-mounting
with front flange
on the same plane
of the panel surface



Assembly type

3

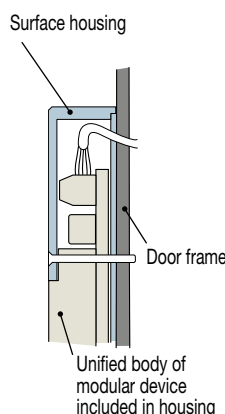
for conventional flush mounting
with front flange
overlapping door frame



Assembly type

4

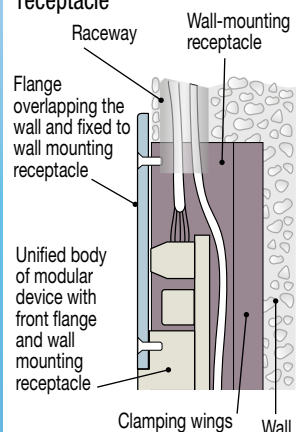
for surface mounting
with using housing

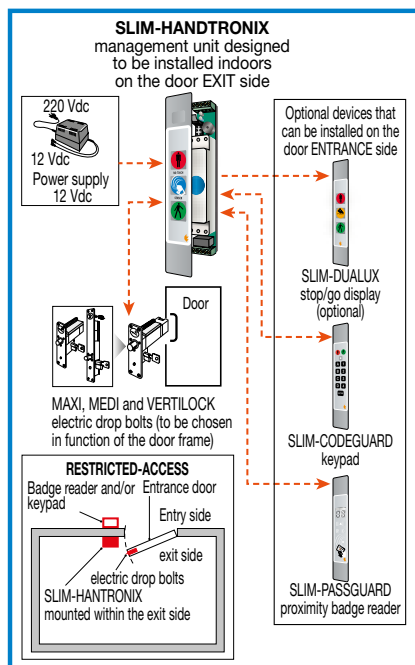


Assembly type

5

for recessed wall-mounting
with flange and wall-mounting
receptacle





SLIM-HANDTRONIX no touch TECNODIMENSIONE PROFESSIONAL "STAND ALONE" UNIT FOR AUTONOMOUS MANAGEMENT OF EACH DOOR

This unit is not simply "No-touch sensorized Stop/Go display" but actually micro stand-alone unit designed to fully control one single door equipped with electrical lock.

One unit for... **5** different needs...

- 1st** Timed unlocking command with automatic re-locking
- 2nd** Debounce logic
- 3rd** Tamper protection
- 4th** Optical and/or acoustic signals
- 5th** Temporary unlimited release



YOUR ENTRY INTO YOUR HOUSE OR APARTMENT
BLOCK IS ALWAYS PROTECTED AND CONTROLLED.

1st

TIMED OPENING WITH AUTOMATIC RE-CLOSURE (time required to authorise the door opening)

No more doors left open accidentally due to wrong movement or distraction! Control switch (with entryphone button, foyer door opening button, code keypad and/or badge, etc.) brings about release for a pre-set amount of time that can be adjusted as required (1-8-20-60 sec) enough to allow transit opening the door. Once the time has elapsed, the door is then locked, even if it has not been opened, and prevents any unauthorised entrance.

2st

DEBOUNCE LOGIC

Finally, a gentle door closing mechanism! After the door has been opened by an authorised opening command, the electrical solenoid bolt stays back so that the door is does not slam back. The pin is also released by a special debounce logic to compensate for undesired bounce or oscillations. In this way, the classic "door closer with pump" can complete its route without any resistance to win and then close the door completely.

Lastly, thanks to the "courtesy service", for manual release of the door using the key (and/or internal handle) the solenoid bolt pin stays back temporarily for the programmed release time even with the key not inserted. This allows you to put away your key, push the door and pass through it even with your hands full (transit with parcels, bags, etc.).



3rd

TAMPER PROTECTION

When in stand-by the door is locked, the unit supervises the door-proximity sensor against the tamper aiming to switch its own contacts. In other words, in stand-by condition, the locking of the bolt is not affected by interruption or alteration of the magnetic field of the reed sensor.

4th

OPTICAL AND/OR ACOUSTIC ALARMS

These signals report if there is a problem with the door. The built-in buzzer activates and the lights of the Stop/Go display flash to signal the following conditions:

- If the door after an authorized transit stays open over a preset time (time-out adjustable 30 sec).
- Every opening obtained unlikely through breaking effraction gives an automatic immediate alarm output. Really the opening of the door is permitted electrically using only authorized command arrived by badge reader for example.



5th

TEMPORARY UNLIMITED RELEASE

This feature enables to permanently unlock the door for cleaning, moving and other purposes, or in the event of fire. It is possible to open the door an unlimited number of times without having to activate the command on the solenoid bolt for each passage.

SLIM-HANDTRONIX no touch

STAND ALONE UNIT FOR THE MANAGEMENT OF SINGLE DOORS



This unit is not simply "No-touch sensorized Stop/Go display" but actually micro stand-alone unit designed to fully control one single door equipped with electrical lock.

This unit provides the following innovative features:

- **Temporization:** timed unlocking command - settable as desired (1-8-20-60 sec.) When the interval ends the door lock re-locks itself automatically, even if the door isn't open, thus preventing unauthorised intrusions.
- **Temporary unlimited unlocking (door locked in open position):** this feature enables to permanently unlock the door for cleaning and other purposes.
- **Temporary unlocking:** (open unlatched) - In case of maintenance, cleaning, moving, etc., the door can be set "open unlatched", only by using the key command, which allows an unlimited number of door openings without the electrical lock be operated after each passage.

Electric striker: the wing returns to lock position as soon as the door is opened to avoid debounce when being closed.

- **Tamper protection:** When in stand-by the door is locked, the unit supervises the door-proximity sensor against the tamper aiming to switch its own contacts. In other words, in stand-by condition, the locking of the bolt is not affected by interruption or alteration of the magnetic field of the reed sensor.
- **Optical and/or acoustic alarms:** These signals report if there is a problem with the door. The built-in buzzer activates and the lights of the Stop/Go display flash to signal the following conditions:
 - If the door after an authorized transit stays open over a preset time (time-out adjustable 30 sec).
 - Every opening obtained unlikely through breaking effraction gives an automatic immediate alarm output. Really the opening of the door is permitted electrically using only authorized command arrived by badge readir for example. - 12 Vdc/120 mA power supply.

Export Product-list

January 2024



TECNODIMENSIONE®

Ordering
information



Q.ty

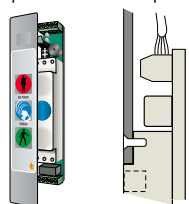
Models for 12 Vdc power supply

MODELS

N°

Assembly type 1

fully aligned concealed for recess-mounting without flange on the same plane of the door frame panel *



SLIM-HANDTRONIX stand alone unit type 1 with fully aligned concealed for recess-mounting on the same plane of the door frame panel without flange.

Ideal to achieve a "smooth" surface (without roughness) that is easy to clean.

Supplied with diffuser screen and gap G for sections with a thickness of 1.6 mm.

Fitted (instead of the manual push button) with an infrared sensor that "sees" a presence up to 10 cm away. Basically, the "contactless" door opening and/or doorbell command is automatically triggered by bringing the hand close to the unit, without actually touching it. Complete with self-adhesive cover designed to be applied after the final installation of the system.

*** In this case it is advisable to prepare the recess during the door frame machining.**

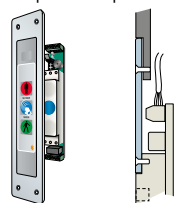
Same with front panel and gap G for sections with a thickness of 3 mm

034991HM

034991HM3

Assembly type 2

fully aligned at milling for recess-mounting with front flange on the same plane of the panel surface ♦



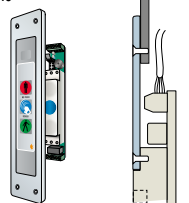
SLIM-HANDTRONIX stand alone unit type 2 for aligned recessed flush fitting in bottom of panel using front flange (e.g. To mount on wall panel next to the door frame on the post where no chasing can be carried out). Fitted (instead of the manual push button) with an infrared sensor that "sees" a presence up to 10 cm away. Basically, the "contactless" door opening and/or doorbell command is automatically triggered by bringing the hand close to the unit, without actually touching it. Supplied with front flange in anodized aluminium with "silver" finish - 250 x 50 mm, thickness 2.5 mm for recess-mounting on the same plane of the panel surface for aligned recessed flush fitting in bottom of plane using front flange. Cover pre-assembled and fixed into the flange niche.

♦ In this case, it is advisable to prepare sunk milling during the panel machining phase.

034992HM

Assembly type 3

for conventional flush mounting with front flange overlapping door frame



SLIM-HANDTRONIX stand alone unit, type 3 for traditional recessed fitting using flange.

Supplied with front flange in anodized aluminium with "silver" finish - 250 x 50mm, thickness 4 mm for flush mounting.

Fitted (instead of the manual push button) with an infrared sensor that "sees" a presence up to 10 cm away.

Basically, the "contactless" door opening and/or doorbell command is automatically triggered by bringing the hand close to the unit, without actually touching it.

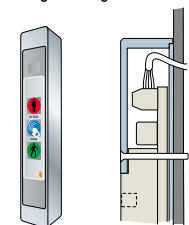
Cover pre-assembled and fixed into the flange niche.

Mounting can be carried out "on site", directly onto the installed door frame.

034993HM

Assembly type 4

for surface mounting with using housing



SLIM-HANDTRONIX stand alone unit type 4 for mounting placed on surface using housing. With extra-strong protective housing, made in anodized silver finish aluminium (35 x 25 x 215 mm).

Fitted (instead of the manual push button) with an infrared sensor that "sees" a presence up to 10 cm away.

Basically, the "contactless" door opening and/or doorbell command is automatically triggered by bringing the hand close to the unit, without actually touching it.

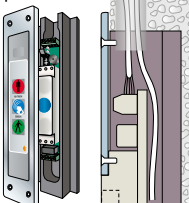
Self-adhesive cover in polycarbonate, provided separately and designed to be used as final cover to hide the 4 fixing screws of the housing on the door frame.

Useful when you wish to avoid recess-mounting or cuts on the door frame.

034994HM

Assembly type 5

for recessed wall-mounting with flange and wall-mounting receptacle



SLIM-HANDTRONIX stand alone unit type 5 for recessed assembly using flange and wall box. Supplied with front flange in anodized aluminium with "silver" finish - 250 x 50 mm, thickness 4 mm, to be fixed to the housing by placing on wall surface.

Self-adhesive cover in polycarbonate pre-assembled and fixed into the flange niche.

Fitted (instead of the manual push button) with an infrared sensor that "sees" a presence up to 10 cm away.

Basically, the "contactless" door opening and/or doorbell command is automatically triggered by bringing the hand close to the unit, without actually touching it.

Also fitted with wall box with "wings" for rapid anchoring (65 x 30 x 230 mm), in plastic taken from single block to be assembled "in a niche" in the wall to house the body of the standalone unit.

Wall niche and cable channel to be prepared beforehand.

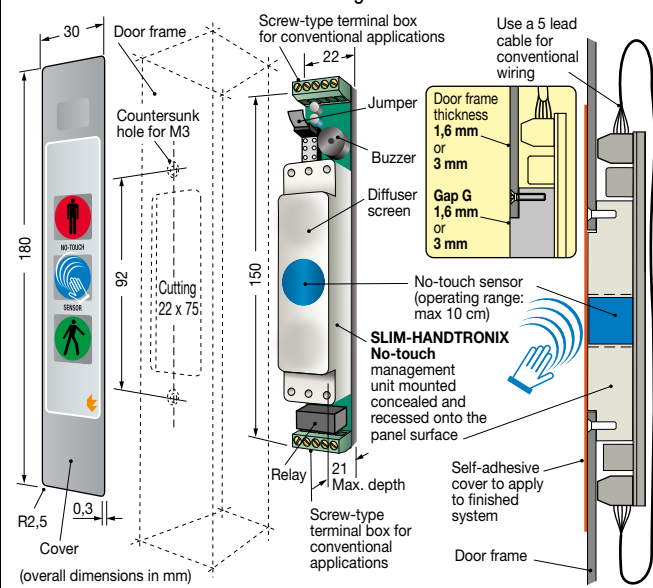
034995HM

Special configurations available at extra charge: Cover with your logo and/or customized.

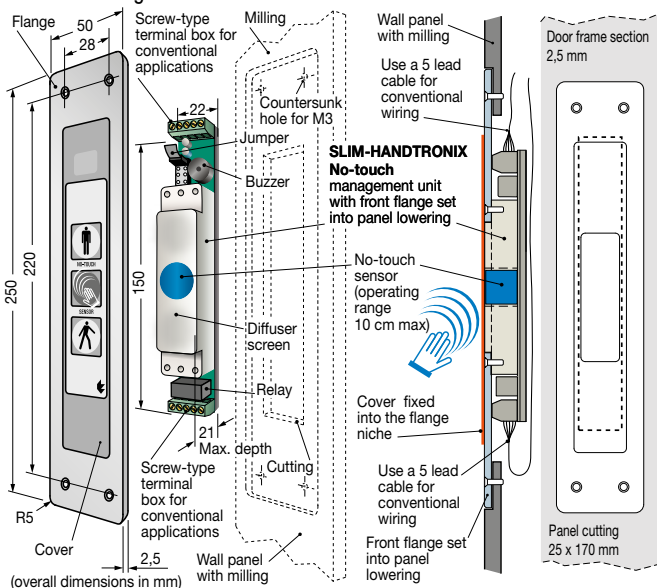
For sizes, measurements and details of chasing, application examples and connection diagrams, see page 94

SLIM-HANDTRONIX STANDALONE UNIT - sizes, application examples and connection diagram

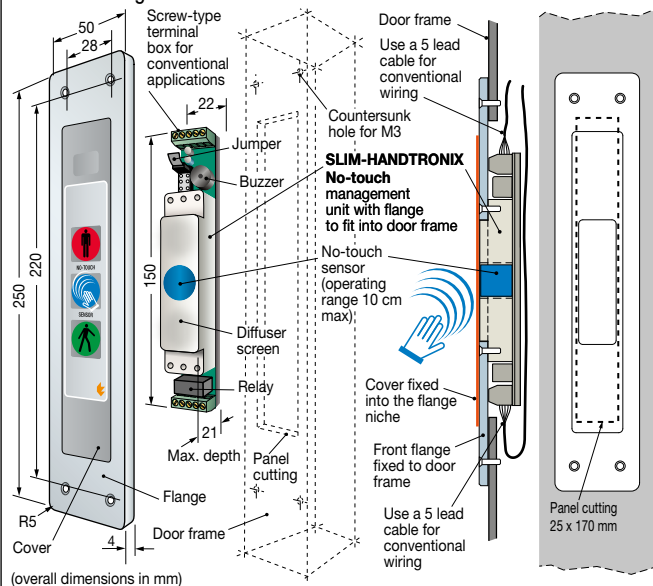
Assembly type 1 total alignment, lock recessed into surface without flange



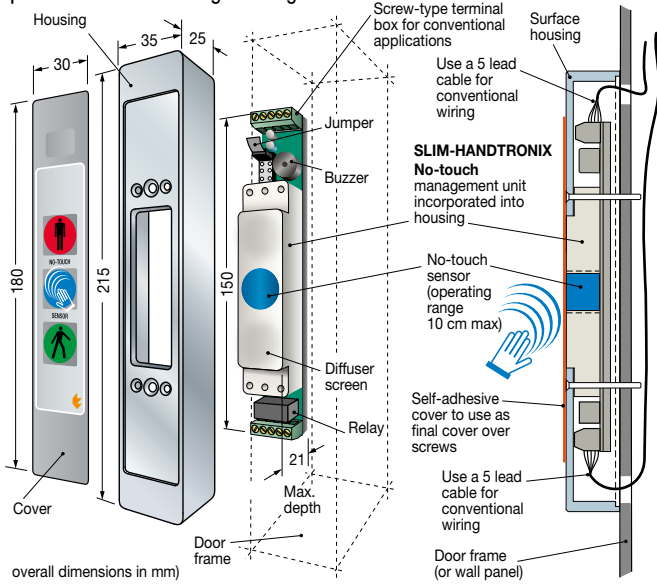
Assembly type 2 alignment at bottom with front flange "flush with surface" at bottom



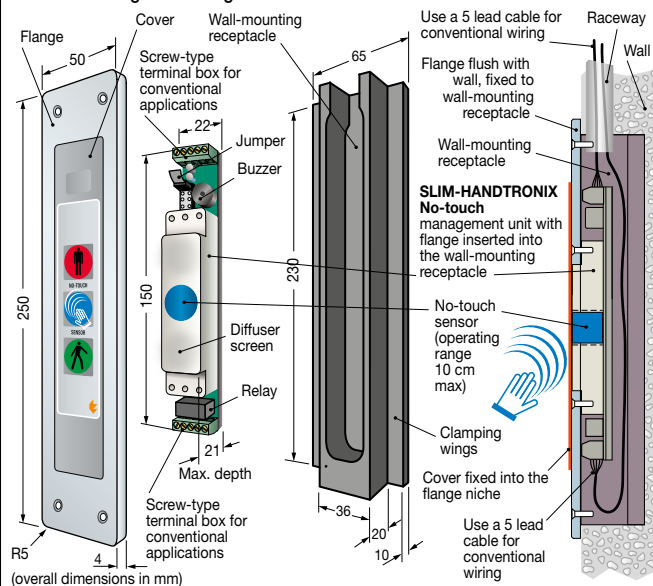
Assembly type 3 traditional fitting with front flange over the lock



Assembly type 4 for mounting placed on surface using housing



Assembly type 5 for recessed wall mounting with flange and wall box



CONNECTION DIAGRAM valid for all 5 types

